

Data logging

Pressure and flow data from points of interest across your entire network

OVERVIEW

i2O DATA LOGGING ENABLES YOU TO PLACE ACCURATE, RELIABLE AND AFFORDABLE i2O LOGGERS AT POINTS OF INTEREST THROUGHOUT YOUR NETWORK, AND VIEW AND ANALYSE DATA FROM YOUR ENTIRE LOGGER ESTATE

HIGH QUALITY

- Manufactured in the UK to externally audited 5S manufacturing standards
- Internationally recognised quality, environmental and security standards: ISO 9001, 14001, 27001
- High precision pressure transducers
- Designed and tested to IP68
- Wide range of temperature and humidity operating conditions
- Drop tested to 1.2m impact on concrete
- Built to order within 1 week lead time

MOST USEFUL DATA

- Up to 3 pressure measurements and 2 flow channels from a single logger
- 10Bar transducers fitted as standard, 30Bar transducers available at no additional cost
- Secure data communication on the 2G or 3G network of your choice
- Threshold and decaying alarms
- Enhanced statistics for transient detection and investigation
- Records mobile network signal strength and battery voltage
- Ability to carry out on-site readings from logger
- Non-volatile data storage up to a year
- Remotely configurable sampling, logging and dial-up intervals
- Data can be exported or integrated with other systems

EASE OF USE

- Quick-fit hoses, cam-lock screws and cable tie mount for quick installation
- Small size and light weight

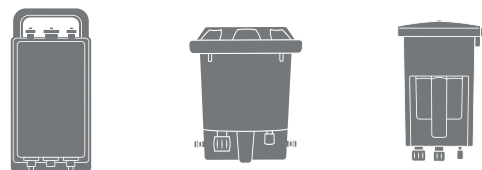
LOWEST LIFETIME COST

Our loggers offer the lowest lifetime cost in the market:

- Installation and configuration using laptop, mobile or tablet
- Internal or external battery, or mains powered
- SIM card and battery easily exchanged by user in the field
- Wide range of antenna options
- Small size and light weight
- Future proofed through over-the-air firmware upgrades
- Options for SFTP or API for data transfer
- Capable of withstanding extreme environmental conditions between -20C and +60C and 85% humidity
- Standard 3 year warranty, extended warranty available

HARDWARE

i2O loggers can be used to monitor pressure and flow at any point of interest in the network. Our data logging solutions can also ingest data from your existing loggers and provide a unified view of your network.



MORE INFO

Learn more about our intelligent network solutions! Visit WWW.I2OWATER.COM or contact us today at INFO@I2OWATER.COM

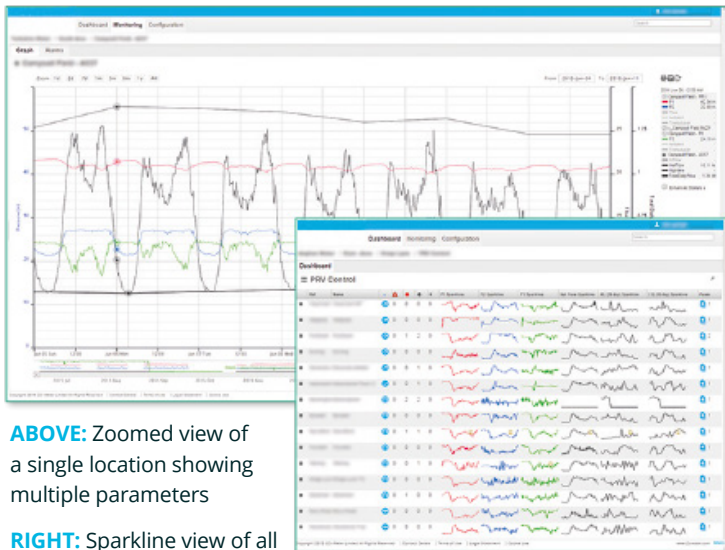
Contact us

T (+44) 02380 111 420

E info@i2owater.com

2 Vancouver Wharf, Hazel Road, Woolston
Southampton, SO19 7BN, United Kingdom

www.i2owater.com



ABOVE: Zoomed view of a single location showing multiple parameters

RIGHT: Sparkline view of all parameters at all locations at a glance

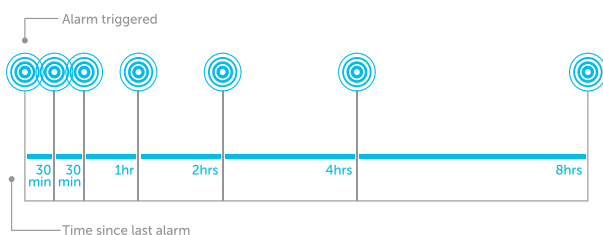
ALARMS

Alarm thresholds can be individually set for each flow and pressure channel. Alarms trigger the following actions:

- Send an SMS and/or an email containing alarm details
- Dial up with increased regularity

A nightline period can be defined so alternative thresholds can be set for a flow channel to aid accurate breach and burst detection.

When an alarm is raised the decaying process is triggered, with data delivered at the intervals shown above. When the alarm is cleared the decay process is cancelled. Data is delivered at this point and then 2 hours later for post-event analysis.



VISUALISATION

Data logging visualises data in ways that make it easier for engineers to identify anomalies, whether they are threshold breaches, or patterns of abnormal performance. The principles of effective visualisation are:

- Easy to view
- Quick to update
- Easy to navigate
- Context brings meaning

i2O offers users two main views of data: graphing and dashboard. Context is provided in multiple ways including: showing a zoomed view in the context of a 12 month view, a location in a network hierarchy or in its geographical location, and presenting all locations in a sortable single view.

WHY i2O?

i2O's solutions currently help more than 100 water companies in 45 countries. We monitor and control water supply to more than 50 million people around the world, helping to reduce leakage by up to 47% and burst frequency by up to 65%.

Clients choose i2O, continue to do so, and extend their deployments of our solutions for 6 main reasons:

- Effectiveness
- Support
- Innovation
- Integration
- Security
- Lifetime cost

i2O is in restless pursuit of new ways to make networks more intelligent, optimising the delivery of clean water across the world.

i2O ENTERPRISE

i2O Enterprise offers an advanced, light-touch solution with enhanced security and flexibility, collecting data and delivering it to existing in-house analysis systems, rather than i2O's cloud. Contact us today or visit i2owater.com/waystobuy to learn more about i2O Enterprise, and which solutions it is compatible with.

Contact us

T (+44) 02380 111 420

E info@i2owater.com

2 Vancouver Wharf, Hazel Road, Woolston
Southampton, SO19 7BN, United Kingdom

www.i2owater.com